

**Nina Weiss
&
Yelena Klairmont**
Landscapes



Nina Weiss, Red New Zealand



Yelena Klairmont, Emerging Order

College of Lake County
Robert T. Wright Community Gallery of Art
June 15 – August 8, 2007

Nina Weiss: Biography

Nina Weiss began studying art in New York at a very young age. During her high school years, she studied drawing in Manhattan at the Art Students' League. She began attending the Tyler School of Art in Philadelphia at the age of sixteen, having skipped her last year of high school. Weiss studied for a year in Rome, through the Junior Year Abroad program of the Tyler School of Art.

Weiss continued her art education at the University of Wisconsin, Madison, studying for her MFA in painting. She then received a Teaching Certification from the Art Education Department. Upon finishing school in 1984, she established her studio and began exhibiting and selling her drawings.

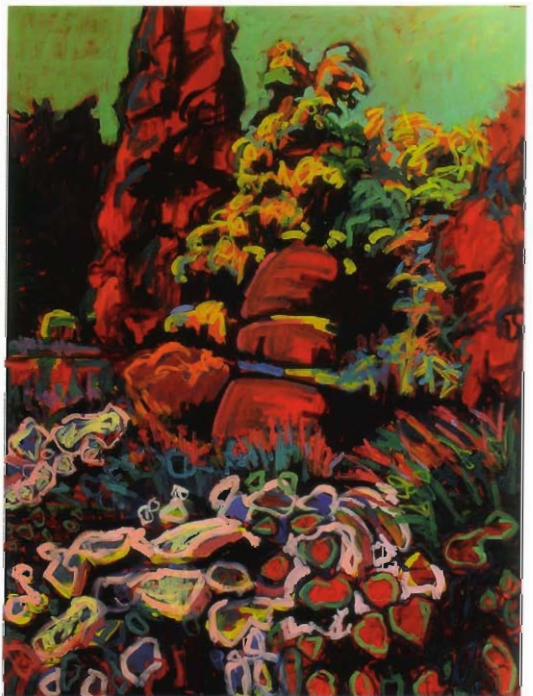
Weiss's love of landscape as subject matter developed upon moving from the East Coast to the Midwest in 1980. The vast horizons of the Midwestern cornfields became fascinating to her. She began exploring the countryside by car and bicycle, documenting the landscape with photographs, and completing her large-scale paintings and drawings in the studio.

Weiss travels throughout the USA and overseas to gather material for her landscapes. She returns to Europe every summer to teach a landscape drawing and painting workshop in Italy and Ireland. She currently teaches at the Art Institute of Chicago, Columbia College and the Evanston Art Center. She lectures and gives demonstrations throughout the Midwest. She is represented in many corporate and private collections throughout the United States, including McDonalds, Aetna Insurance, Eli Lilly, United Airlines, Avon, and Deloitte Touche. She is represented locally by the Anne Loucks Gallery in Glencoe.

Nina Weiss: Artist's Statement

I experience a strong emotive response to landscape. Landscape gives me both a great sense of peace and a rush of excitement. Studying the landscape connects me to something big, basic, and solid. The genre of landscape painting has a long tradition in the arts. My twenty-five year journey as a landscape painter has been a movement towards a post-modern, 21st century vision of these traditional landscapes.

My paintings are landscapes that draw the viewer into a heightened vision of color and gesture. They depict the natural world with colors that are intense, lush, and dramatic. The colors go beyond traditional ideas of a green landscape. I tease out the complex colors I see and feel in the landscape using layers of color, line, and form to build these vibrant paintings. The works are each a powerful moment from my travels in the everyday landscapes of our world.



Nina Weiss, *Red Garden*

Yelena Klairmont: Biography

Yelena Klairmont left the Ukraine at seventeen years of age, already a promising classical pianist. She attended the University of Toronto in Canada and continued to pursue classical music. She had by then taken up the organ, and soon began teaching and conducting choral music. As sometimes happens, life events intervened. Klairmont met her husband and found herself relocated to Highland Park.

Living in this lovely natural environment of ravines, and bluffs, Klairmont developed an interest in Jens Jensen, his philosophy and his passionate belief that "art has its roots in the soil". This sparked her interest in the genre of landscape painting. She entered and completed the academic program at the American Academy of Art in Chicago and immersed herself in the techniques of painting.

Klairmont works in oils usually on a large scale. Some of her canvases depict Jensen's designs in Highland Park, and in the Chicago area. Her interest in Jen Jensen's landscapes, led her to develop a new thematic series of "Water Abstractions" all of which were inspired by The Caldwell Pond in Chicago's Lincoln Park Zoo. Concurrently the artist is fascinated by aerial scenes that are viewed from high altitude. Klairmont endeavors to capture these panoramas in paint.

Klairmont was recently commissioned to execute a variety of paintings for Chicago Westin Hotel, now completed and in place. Some of her Jen Jensen landscapes were exhibited recently at the Lake Forest Historical Museum. She was juried into an Artist Project at Art Chicago which is an international fine art show held at the Merchandise Mart this April. In May 2007, she was featured as an Artist of the Month on the Artist Magazine web site. Klairmont's works are represented in many corporate and public collections.

Yelena Klairmont: Artist's Statement

Seen from above, the world becomes vast, as the horizon descends. Edges and textures blur, as colors shift at high altitudes. The act of seeing from above permits me to experience the world in a new perspective. Fascinating new patterns, distant shapes, luminous light and radiant colors emerge from great distances seen through the atmosphere.

In these paintings I am exploring a relationship between the rigid, geometric man-made patterns such as cultivated fields, deforested lands, urban developments, and industrial sites, all of which are an integral part of the contemporary landscape. These human constructs are juxtaposed against the patterns of organic forms and the untouched, seeming randomness of nature. Seen from above, one's awareness of earth's fragile mutability intensifies and a bittersweet awe sets in. Painting the landscape in a series at various seasons and times of day, I am recording the fundamental universal truth of change.



Yelena Klairmont, *In Darkness is Light*

NINA WEISS

Born Queens, NY **Resides** Highland Park, IL

Education BFA Tyler School of Art, PA
Art Ed. Certification, University of Wisconsin, Madison, WI

Selected Solo Exhibitions

- 2005 *Winter Break*, Joyce Petter Gallery, Saugatuck, MI
- 2002 *In the Sun's Light*, Anne Loucks Gallery, Glencoe, IL
- 2000 *Nina Weiss: A Particular Vision*, Chicago Botanic Garden, Glencoe, IL

Selected Group Exhibitions

- 2006 *Color Fields...*, Harris Magee Gallery, Jackson, MI
- 2005 *Travel Documents*, Columbia College A + D Gallery, Chicago, IL & traveled to Oakton Community College, Skokie, IL

Selected Teaching

- 1991 – Present, School of the Art Institute of Chicago, Div. Cont. Studies
- 1999 – Present, Columbia College, Chicago, IL

Select Projects

- 2007 *Cool Globes for a Warm Planet*, Mayor Daley's Cool Globe Project.
- 2004 *Ice Harvest*, film by Harold Ramis, 12 paintings in movie set
- 2002 Art in Embassies Program, Washington, DC. Drawings loaned to the U.S Ambassadors of Bahrain, Saudi Arabia & Nairobi, Kenya

YELENA KLAIRMONT

Born Kiev, Ukraine **Resides** Highland Park, IL

Education University of Toronto, Toronto, Canada
DePaul University, Chicago, IL & American Academy of Art, Chicago, IL

Selected Solo Exhibitions

- 2006 *Revealing the Concealed*, Illinois Institute of Art, Chicago, IL
- 2004 *Poetic Magic of Landscapes*, ARC Gallery, Chicago, IL

Selected Group Exhibitions

- 2007 *The Artist Project*, Art Chicago, Merchandise Mart, Chicago, IL
- 2007 *Finding Center*, Illinois Institute of Art, Chicago, IL
- 2007 *The Eco Arts, Inspiring Change*, Space 900, Chicago, IL
- 2007 *Art of the Landscape, Retrospective on Jens Jensen*, Lake Forest Historical Museum, Lake Forest, IL
- 2006 *National Juried Acquisition Exhibition*, Illinois Institute of Art, Chicago, IL

2007 Corporate Commission

The Westin Chicago Northwest, 6 pieces for the Hotel Lobby & Business Center

Awards

- 2007 Finalist- Artist Magazine Annual Art Competition, Featured: Artist of the Month May 2007 Web page

This program is supported in part by a grant from the Illinois Arts Council, a state agency. The Robert T. Wright Community Gallery of Art is a project of the College of Lake County Foundation.



This program is partially sponsored by a grant from the Illinois Arts Council



Nina Weiss, Spring: *Bannockburn Creek*



Yelena Klairmont, *The Line of Scrimmage: Man Meets Nature*

Exhibition Checklist

Nina Weiss

Red New Zealand, 2007, oil on canvas, 60" x 60"
Green New Zealand, 2007, oil on canvas, 60" x 60"
Spring: Bannockburn Creek, 2007, oil on canvas, 48" X 24"
Orange Light: Ryerson, 2007, oil on canvas, 60" x 36"
Heller Woods Diptych, 2007, oil on canvas, 48" x 72"
Gorse and Heather, 2006, oil on canvas, 36" X 36"
Red Garden, 2006, oil on canvas, 48" X 36"
Garden Explosion, 2006, oil on canvas, 60" x 36"
Across the Mississippi, 2006, oil on canvas, 60" x 36"
Yellow Autumn, 2006, oil on canvas, 48" x 36"
Autumn Rhythm, 2006, oil on canvas, 48" x 36"
View from the Villa, 2005, oil on canvas, 48" x 36"

Yelena Klairmont

The Line of Scrimmage: Man Meets Nature, 2007, oil on canvas, 48" x 72"
Urban Anywhere, oil on canvas, 2007, 36" x 36"
Bears from Above, oil on canvas, 2007, 36" x 36"
Clouds of Illusion Thin; Illumination Encompasses the World, 2006,
oil on canvas, 48" x 72"
Emerging Order, 2006, oil on canvas, 36" x 72"
Summer Wetlands, 2006, oil on canvas, 48" x 72"
Transcendent Comprehension of the Soul, 2006, oil on canvas, 72" x 48"
Global Transformation, 2006, oil on canvas, 60" x 48"
In Darkness is Light, 2006, oil on canvas, 36" x 72"

Information

Voice: 847-543-2240, E-mail sjones@clcollinois.edu
Web page: <http://gallery.clcollinois.edu/>
College of Lake County / Robert T. Wright Gallery
19351 W. Washington St., Grayslake, IL 60030

Upcoming Exhibitions at the Robert T. Wright Gallery:

Grow Up I Want To Be... August 17 – September 23, 2007
Reception: Friday, Aug. 24, 7-9 pm

Recent Works: A Juried Competition, September 28 – November 4
Reception: Friday, Sept. 28, 7-9 pm