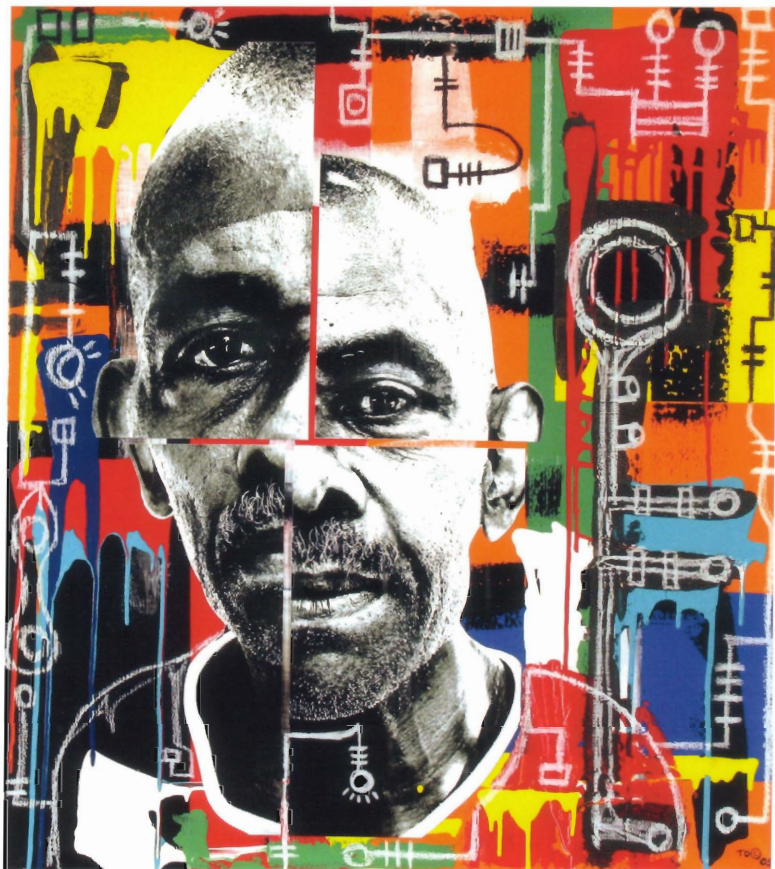


**College of Lake County  
Art Faculty Exhibition**



**College of Lake County  
November 10 – December 15, 2006**



**Terry Dixon**

*Bru*, 2005

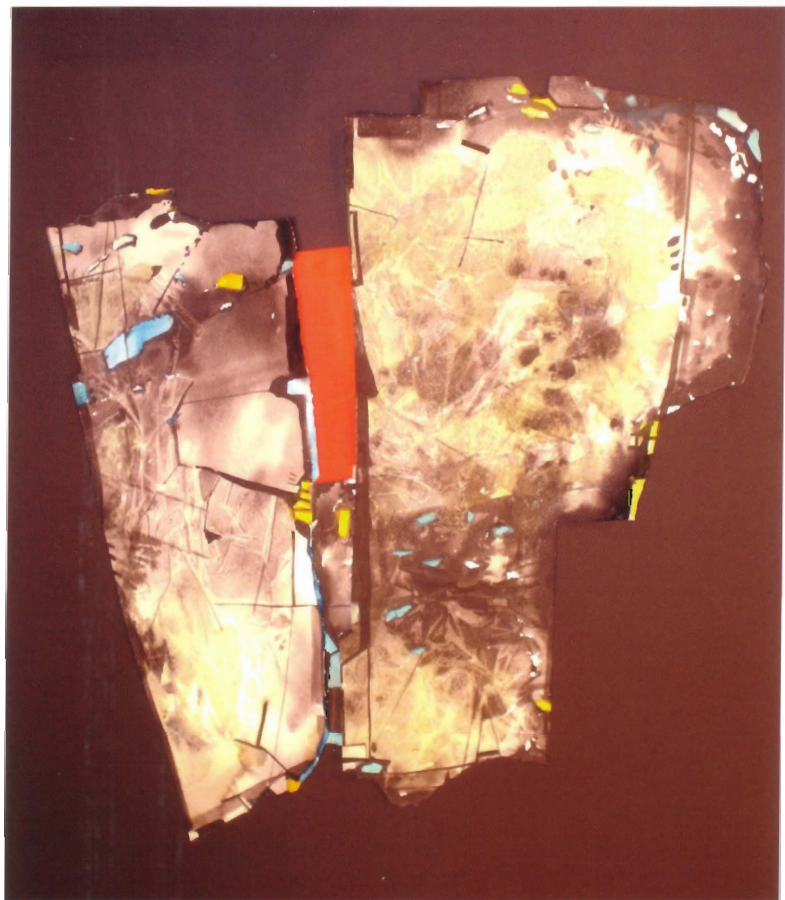
Mixed Media, 36" x 36"

Front:

**David Bolton**

*Stacking Teapot, (teapot with Infuser & jar)*, 2003

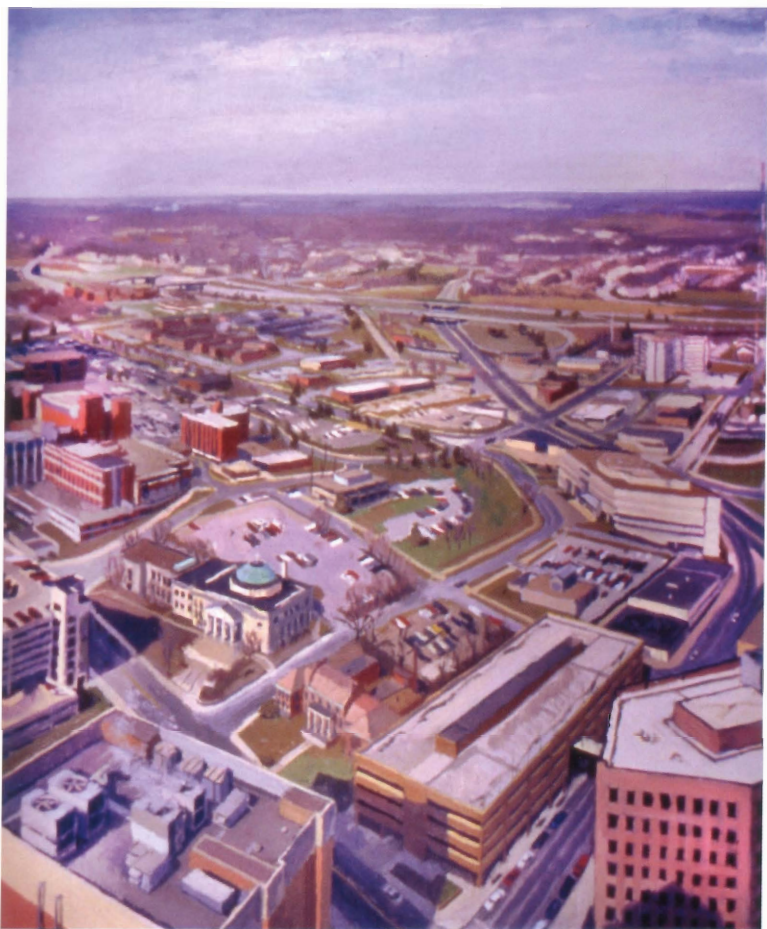
Stoneware, 10" x 11" x 8"



**Bob Lossmann**

*Cleft*, 2006

Watercolor Collage, 38" x 30"



**Hans Habeger**

*Des Moines, Looking Northwest from the Embassy Club, 2005*

Oil on canvas, 28" x 23"



## **Roland Miller**

*Road Closed, Near Milford, Nebraska, 2006*

Digital Pigment Print from Digital Capture, 12" x 18"

## **College of Lake County Art Faculty Exhibition**

A focus show of full-time faculty

Robert T. Wright Community Gallery of Art

**Reception:** Friday, Nov. 10, 7:00-9:00 p.m.

Free and open to the public.

### **Gallery hours:**

Mon-Thu 8:00 a.m.-9:00 p.m.; Fri/Sat 9:00 a.m.-4:30 p.m.

Sun 1:00-5:00 p.m.; Closed: Nov. 22-26

**Information:** 847-543-2240; Email: [sjones@clcillinois.edu](mailto:sjones@clcillinois.edu)

Web page: <http://gallery.clcillinois.edu/>