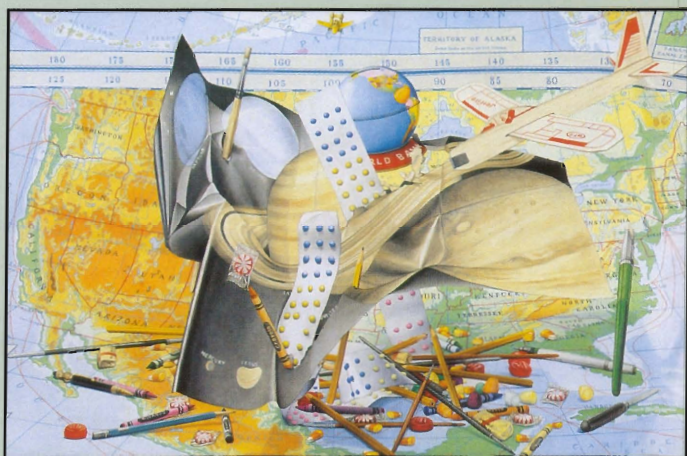


Yale Factor
Renee McGinnis
Jacqueline Moses

World View



Yale Factor, *Uncle Art and the World Bank*, 2001, oils on canvas

College of Lake County
Robert T. Wright Community Gallery of Art
November 12 – December 17, 2004

World View

YALE FACTOR

Yale Factor is one artist who tests our perceptions of reality and illusion. His most recent work, the narrative still-life paintings, synthesizes his earlier work and progresses to a new level. These paintings are autobiographical; they utilize objects with personal meaning to the artist. A sense of “place” seems to infiltrate each canvas and sets the stage for a highly subjective drama. Maps and charts of places where the artist had lived or visited emerge as personal landscapes to provide a backdrop. The quest for illusion, however, adopts a slightly new twist in these paintings. Before us are collections of objects rendered as trompe l’oeil, representations creating a three-dimensional illusion. At second glance, perhaps from a corner of our eye, these objects suggest activity. They hover, they pierce, they congregate, they hide, and they explode. What begins as re-creation of reality transforms into surreality.

Sections of the painting act in sequence. The audience is taken on a technical tour, beginning at the picture plane, through adjacent sections which fall into the background in turn, ending back at the original point of entry. The rendering is careful and exact. Results often border on the photographic. Recognizable objects and visages are often subtly altered, evoking uniquely constructed worlds. The sharp contrast of intimate detail against subdued shadows brings to life unexpected aspects of a scene.

Born and raised in Chicago, Yale Factor infuses his paintings and drawings with a Midwestern sensibility. His work has been shown in regional, national and international juried exhibitions, as well as in one-person exhibitions in museums and art centers across the nation. Factor has been a Professor of Art at Northern Illinois University since 1978.

Artist Statements

RENEE McGINNIS

In 1984, McGinnis received a B.F.A. from the Illinois Wesleyan University in Bloomington, Illinois and later studied sociology and anthropology at the University of Chicago. Her artwork has been exhibited at the Elmhurst Art Museum, Steppenwolf Theater, University of Illinois, Woman Made Gallery, Hyde Park Art Center, Graham Foundation, Rockford Art Museum, Wood Street Gallery, Artemesia, and ARC Gallery. Outside of Illinois Renee has shown work at Fraser Gallery in Washington D.C., Horizon Gallery in Pittsburgh, several galleries in Bremen, Germany, Gang Gallery, Limner Gallery in Soho, NY, and Swan Gallery in Australia. Her work is also part of a permanent collection at Chicago's East Bank Club and was included in former President William Jefferson Clinton & Hillary Rodham Clinton's collection in the White House. Renee is listed in Who's Who of American Women (21st Edition) and the Encyclopedia of Living Artists (10th Edition) and is in the film "American Burqa". Most recently, McGinnis co-produced "The Chicago Solution Show" in 2003, juried by Ed Paschke and is working with James Rondeau on "The Chicago Solution Show 2005" to be held in June at ARC Gallery.

Renee McGinnis' allegorical paintings hope to serve as beautiful though difficult warnings to us all. Each work communicates humanity's concerns on a metaphysical level. They speak visually about our people, times, triumphs, tragedies and hopes and how these conditions consistently co-exist. Through these works McGinnis hopes to activate the intellectual overdrive we all possess.

JACQUELINE MOSES

My intent is to present pictorial essays on different aspects of life through the narrative content in each image. The unique qualities of art to record and memorialize events from the past and present has allowed me to do this.

My work is emotionally inspired and intellectually structured. Each painting and/or construction is a combination of images culminating in one work of art. The introduction of photographic transfers in some of my most recent work gives yet another dimension to my interest in integrating images and ideas often dissimilar in nature and content. It leaves the viewer to question where one begins and the other ends. In other words, assimilation is so complete that the work of art has become ONE.

My paintings are created with the specific intention of exposing some of the current problems society is faced with, the urgent need for them to be dealt with—not ignored—and the important part integration has in the future. Integrating the best values, concepts, art, theories and philosophies will help everyone live better and create a healthier environment for the future. Art acts as a barometer reflecting the various pressures, feeling and desires felt by one and within one's surroundings. As a catharsis, art can allow one to purge oneself of feelings of hatred, anger, fear and/or hostility so the feelings can be worked out, shared and expressed. The unique qualities of art have allowed me to project my theories on the future in the same manner. We are now all affected by the world and can no longer ignore the ways in which we are dependent upon each other.



Renee McGinnis, *A Force More Powerful* (detail), 2003, oil on tabletop



Jacqueline Moses, *The World*, 2004, oil on canvas

World View Exhibition Checklist

Yale Factor

1. *Little House on the Prairie*, 2004, oils on canvas, 24" x 36"
2. *Hope Chest*, 2004, oils on canvas, 24" x 36"
3. *When Monkeys Fly*, 2004, oils on canvas, 24" x 36"
4. *Ruminations of a Curious Mind*, 2003, oils on canvas, 24" x 36"
5. *The End of the Road*, 2002, oils on canvas, 24" x 36"
6. *How the West Was Won*, 2001, oils on canvas, 24" x 36"
7. *Uncle Art and the World Bank*, 2001, oils on canvas, 24" x 36"
8. *Equilibrium*, 2000, oils on canvas, 24" x 36"
9. *Beyond the Beyond*, 2000, oils on canvas, 24" x 36"

Renee McGinnis

10. *A Force More Powerful*, 2003, oil on tabletop, 41" in diameter
11. *Heads of State Learning to Co-operate*, 2003, oil on canvas, 24" x 36"
12. *Land of Linc On*, 2000, oil on canvas, 54" x 60"
13. *www.orb (World Wide Wisdom)*, 1999, mixed media, 38" x 18" x 18"
14. *Escape – Enter*, 1998, oil on canvas, 72" x 46"
15. *Wiseman*, 1998, oil, gold leaf, 72" x 25"
16. *Global Momma*, 1996, oil on canvas, 72" x 52"
17. *Global Painter in the Moonlight*, 1995, oil & raw canvas, 51" x 52"

Jacqueline Moses

18. *The World*, 2004, oil on canvas, 54" x 54"
19. *CIA*, 2004, oil on canvas, 66" x 54"
20. *Globalization Affects: Chicago*, 2002, oil on canvas, 54" x 66"
Collection of June Spiezer, Northbrook, IL
21. *Remnants*, 2002, oil on canvas, 66" x 54"
22. *Inimical Intrusions*, 1995, 54" x 66"
23. *Mishap*, 1989, oil on canvas, 54" x 64"
24. *Moon Over Earth*, 1998, oil stick on paper, 22" x 30"
25. *Earth Over Moon*, 1998, oil stick on paper, 22" x 30"
Collection of Mr. And Mrs. David Temkin

College of Lake County

Robert T. Wright Community Gallery of Art
19351 West Washington Street
Grayslake, IL 60030-1198

Information: 847-543-2240; Email: sjones@clcillinois.edu

Web page: <http://yyz.clc.cc.il.us/artgallery/>



This program is sponsored in part by a grant from the Illinois Arts Council, a state agency. The Robert T. Wright Community Gallery of Art is a project of the College of Lake County Foundation.